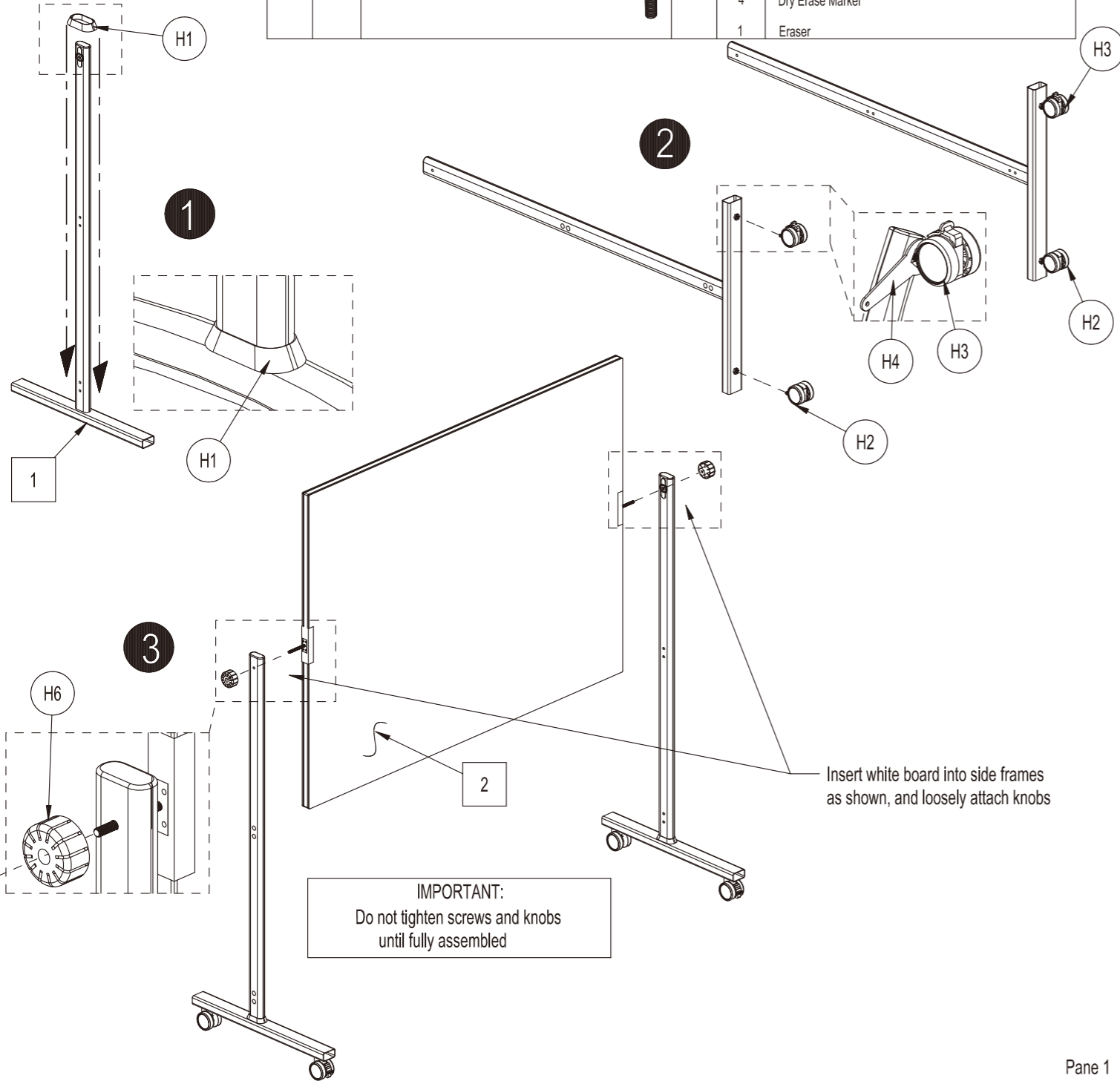




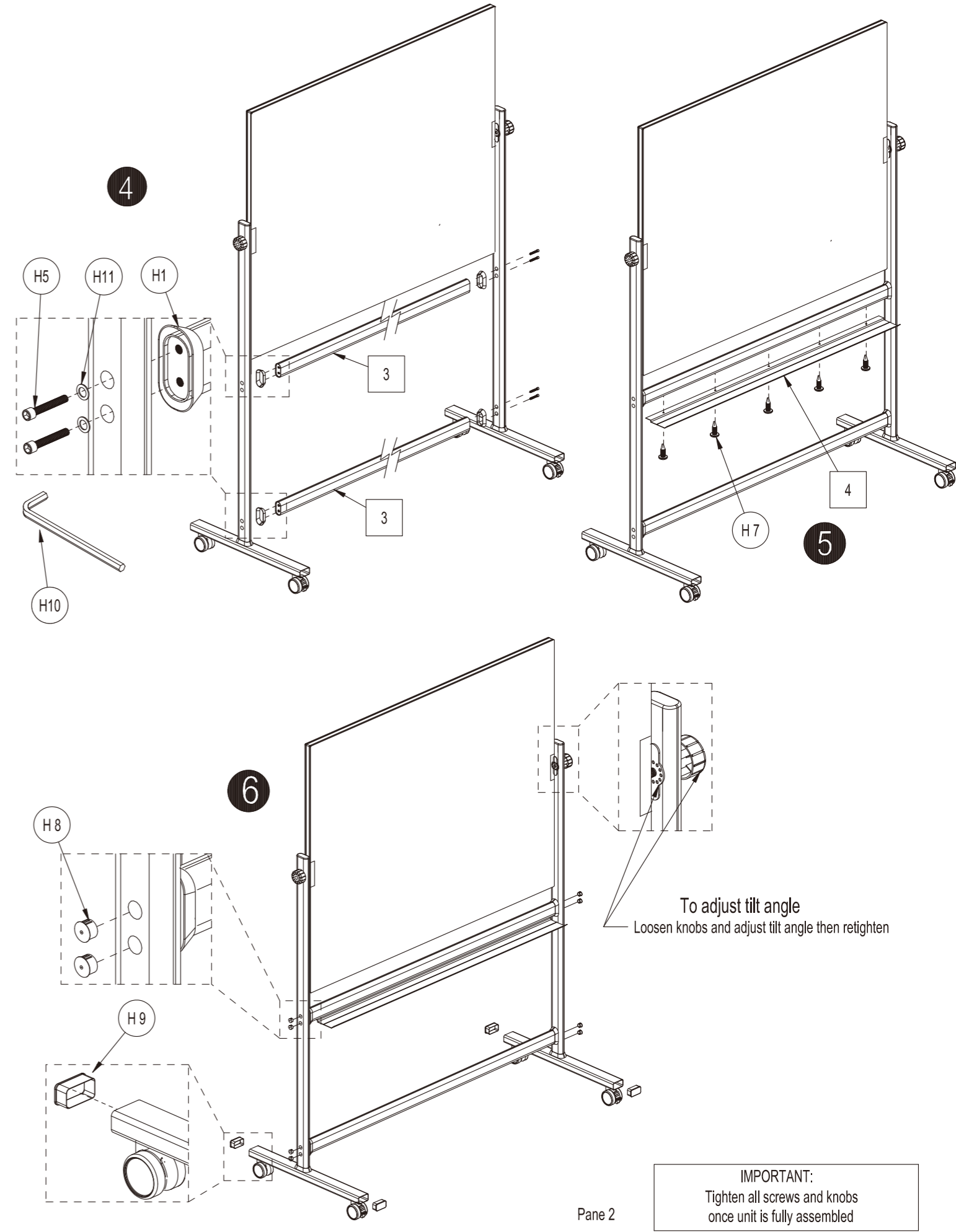
Mobile Glassboard

Assembly Instruction

Contents					
ef.	Qty.	Description	Ref.	Qty.	Description
1	2	Side Frame	H6	2	Knob
2	1	Glass Board			
3	2	Connector Bar	H7	5	#4 Self Tapping Phillips Wood Screw
4	1	Tray	H8	8	End Cap
H1	6	Joint Cover	H9	6	Joint Cover
H2	2	Swivel Caster	H10	1	6mm Hex Key
H3	2	Swivel Caster with Brake	H11	8	Plain Washer
H4	1	Wrench		1	4 Hex Key with Phillips Head
H5	8	M8 x 1.25 x 35mm Lg. Socket Head Screw		2	Magnet
				4	Dry Erase Marker
				1	Eraser



Pane 1



Pane 2