

Ergovida

GIANT
OFFICE FURNITURE

www.giantofficefurniture.com.au

Aluminum Interactive Counterbalance Monitor Arms



Detachable VESA panel makes installation easier

Vertical Adjustment

Gas Spring Assisted



Both grommet and desk clamp mounting available



Create a clean sleek look by concealing cables from sight



Built-in spring tension gauge adjusts for various arm weight loads



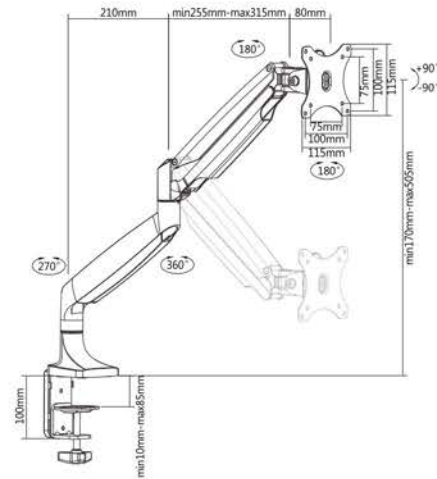
Added slots for holding tools in case of possible maintenance in future



Arm Extend: 525mm
EMA10-C12

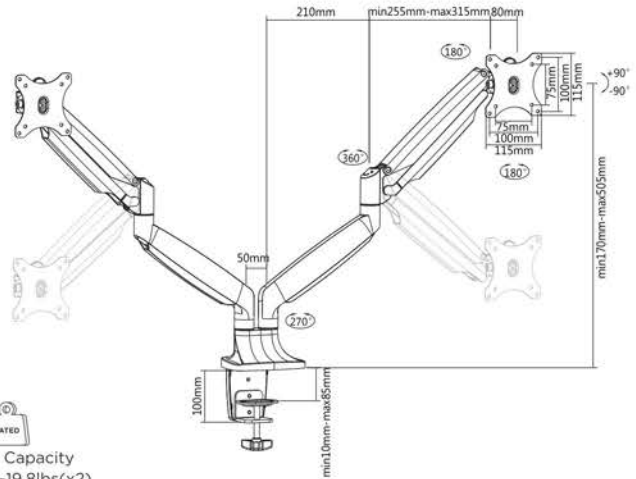
 **Weight Capacity**
1-9kg/2.2-19.8lbs

Compliant test to
ANSI/BIFMA mechanical safety
and performance standards.



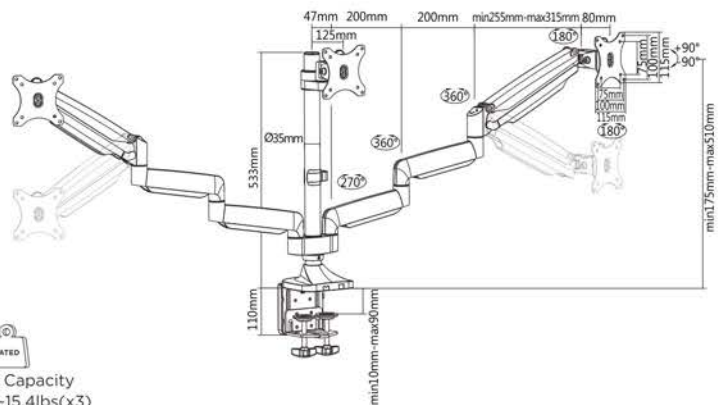
Arm Extend: 525mm
EMA10-C24

 **Weight Capacity**
1-9kg/2.2-19.8lbs(x2)



Arm Extend: 715mm
EMA10-C36

 **Weight Capacity**
1-7kg/2.2-15.4lbs(x3)



Screen Size
13"-32"



Tilt Range
+90°--90°



Swivel Range
+90°--90°



Screen Rotation
180°



VESA Compatible
75x75 100x100



Curved Monitor



Cable Management

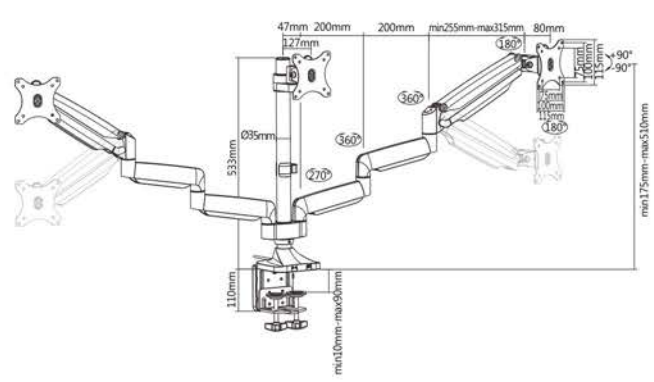
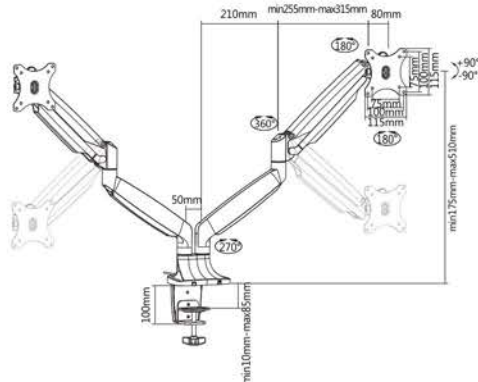
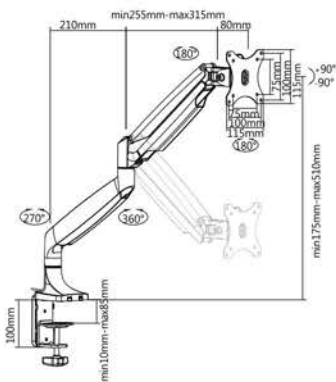
Aluminum Interactive Counterbalance Monitor Arms

Ergovida



3.0 USB Port and Audio Port on Base of the Mount

convenient for supporting data transfer, charging, headphones, and microphone.



- Screen Size: 13"-32"
- Tilt Range: +90°--90°
- Swivel Range: +90°--90°
- Screen Rotation: 180°
- VESA Compatible: 75x75 100x100
- Curved Monitor
- Cable Management